

# Safety around trees and powerlines

## Why trees near powerlines need to be trimmed

Power and Water is committed to the safety of members of the public, contractors and staff. Trees, palm fronds and branches can be blown into powerlines during storms if they grow too close to them.

If this happens, they can conduct electricity and become safety hazards.

Many power outages are caused by trees and palm fronds touching powerlines.

## Call us about trees near powerlines

If you phone Power and Water before you start any pruning, we can help you determine if there are any safety factors to consider. Your safety is our number one concern.

We are happy to answer all queries and concerns about trees and powerlines, but we particularly ask that you call us if you see a tree or palm within three metres of a powerline.

If our contractor notifies you that a work crew will be in your area and you wish to discuss vegetation around the powerlines, please phone or email us.

General enquiries 1800 245 092

Email [customerservice@powerwater.com.au](mailto:customerservice@powerwater.com.au)

## Overhead powerlines on the roadside

Power and Water's vegetation management contractors

will clear the vegetation around powerlines in the road reserve and remove the debris from the site. This includes trees that may come from your property and intrude into the safe clearance distance of the powerline on the road reserve.

Sometimes debris from your trees will fall into your yard. The tree trimming contractor will leave a card for you to contact us to arrange a suitable time to enter your yard and remove the debris.

Power and Water works closely with local councils and the Department of Construction and Infrastructure (DCI) to manage vegetation near overhead powerlines in the road reserve.

## Do unsafe trees have to be totally removed?

Power and Water's vegetation program identifies vegetation near powerlines that pose a safety risk. Some trees and palms are not suitable for growing under or near powerlines. In some cases, the pruning method may not address the safety issue or may impact on the aesthetics and the plants may need to be removed.

If contractors identify unsafe vegetation on a private property, the property owner will be contacted to discuss removing it permanently.

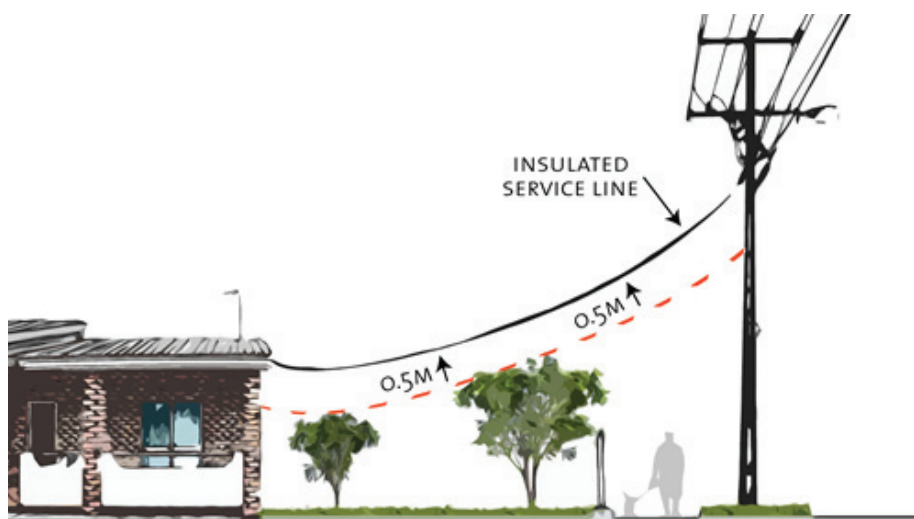


Occasionally, a tree or palm on the road reserve in front of your property may need to be removed. This is done in consultation with your local council.

## Electricity service line on your property

The property owner is responsible for keeping trees clear of the insulated service line, which is the line running from the power pole on the road reserve to the house.

If you have any concerns about your service line, give us a call before you start any pruning so we can advise you on the safest way to trim the vegetation.



If required, Power and Water will de-energise and temporarily remove the service line. Fees do apply.

**Please note**, if your service line is damaged in a storm or cyclone, you need a Certificate of Compliance from a licensed electrician before we can reconnect power to your home.

## Who cuts the trees? Do they know what they're doing?

Power and Water contracts skilled and specially trained arborists to identify and remove trees near powerlines. They are trained to work near powerlines and having training in arboriculture techniques.

Vegetation management contractors follow the work practices in the Australian Standard AS4373 'Pruning Trees Amenity trees'.

Our primary responsibility is to cut trees to ensure the safety of the public and our staff.

Contractors may employ the services of an arborist to make sure trees and palms are trimmed appropriately and to get the best possible aesthetic result.

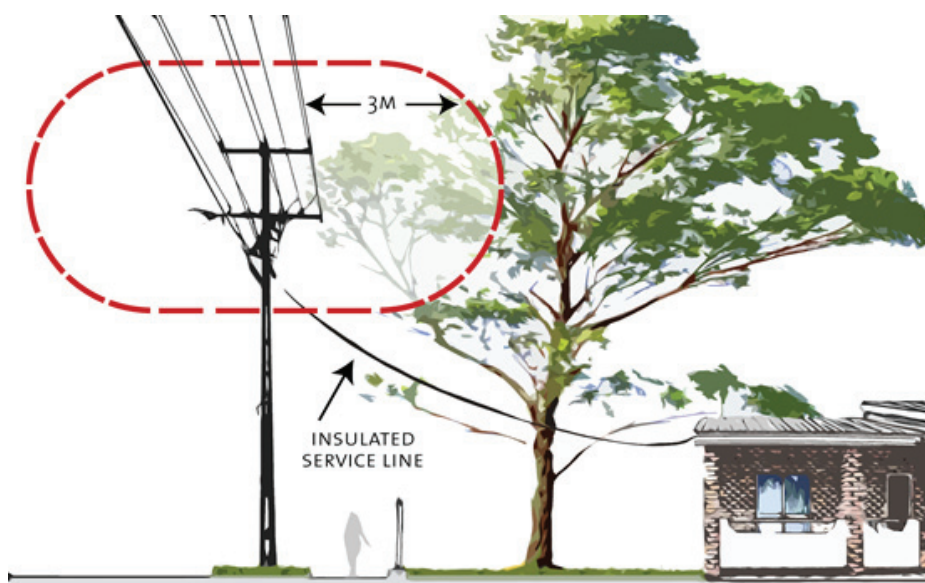
## How do we notify our customers where our contractors are trimming trees?

Before any trimming in urban areas begins, the contractor will drop leaflets in all local letterboxes, where service is available.

Power and Water advertises contractors' planned locations regularly in local newspapers.

We also advertise weekly on the radio on Monday mornings, on commercial radio stations in the Top End and on our website at [powerwater.com.au/plannedworks](http://powerwater.com.au/plannedworks)

Advance notice may not be possible when emergency or urgent tree trimming work needs to be carried out.



## What can you do to help?

You can help by calling us first if you see a tree or palm close to or touching a powerline. Please do not try to prune it yourself, as this is dangerous.

If you are landscaping near or under powerlines, plan ahead. See below the right type of trees to plant near powerlines and the distances to plant in your front yard near overhead powerlines.

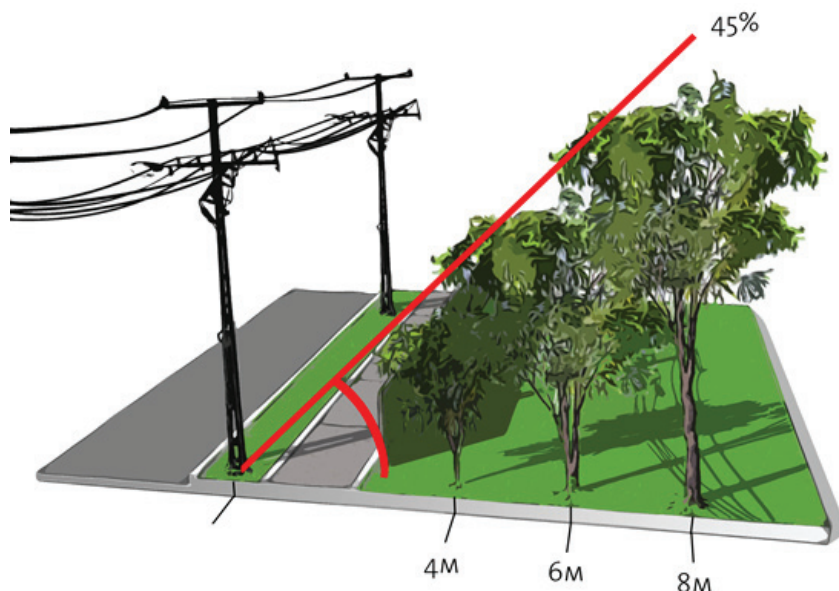
## What are the best trees to plant near powerlines?

The best trees or shrubs are those with a mature height of no more than three metres. Native species are most appropriate. Your local council or nursery should be able to give you a list of suitable species.

Ideally palms should be planted five metres away from powerlines.

If you want to plant taller plants, find out what the mature height is and plant it that same distance away from the powerline. That way, if the tree were to fall, it would stay clear of the powerline.

The diagram on the right shows the safe distances for planting in your front yard near overhead powerlines. Before you plant in powerline easements, contact us to check if there are special planting requirements.



## Dial before you dig

Before planting a tree on your nature strip, call "Dial Before You Dig" service to make sure you won't dig into underground powerlines. For planting inside your property boundary consult a qualified electrician.

**Phone:** 1100 **Fax:** 1300 652 077 **Web:** [www.dialbeforeyoudig.com.au](http://www.dialbeforeyoudig.com.au)

## Kids and powerlines - facts and tips

Children should not climb trees that are near powerlines, it could be dangerous.

## Our commitment to you

When we trim trees or palms in your area, we will:

- Advertise the location where our contractors are working.
- Consult with you as much as possible regarding removal of trees.
- Remove all branches and debris from the site on the same day.
- Cut trees in an environmentally responsible way.
- Make every effort to aesthetically trim problem trees and palms.

## More information

For more information visit [powerwater.com.au](http://powerwater.com.au) or call 1800 245 092.