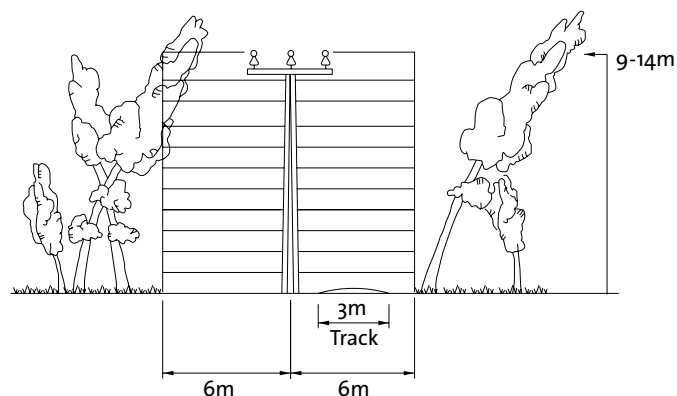


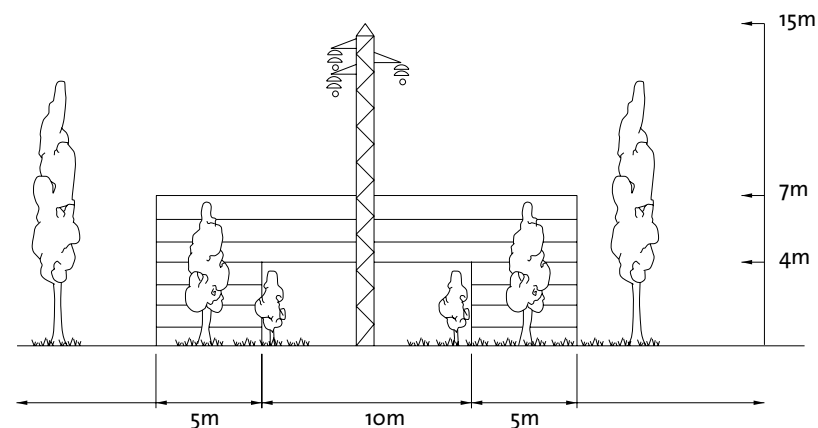
Route clearing Rural Distribution

Possible hazard to
be removed if higher
than conductor

No likelihood
of danger to line
DO NOT REMOVE



Allowable tree heights adjacent to transmission lines



Height NOT to exceed
distance from base
of tower minus 2m
(both sides)

Notes:

1. In the interest of conserving the route clearing should be confined to 12m. Trees overhanging the 12m clearing should be selectively lopped or removed.
2. Trees are to be cut at ground level and roots left, except in the 3m wide track.
3. Low scrub under 1m need not to be cleared in order to minimise erosion.
4. An access track 3m wide is to be built along the clearing in areas not close to a road. If clearing is close to a road, tracks to each pole position should be built. For powerlines inside private property a 3m access track is to be built.
5. Trees outside the 12m clearing that present a hazard to the line shall be lopped to reduce the risk both to the tree owner and Power and Water. A hazard is defined as a tree which, if it fell from its base across the clearing, would strike the conductor or in windy conditions would cause branches to contact live power lines. It is the tree owners responsibility to ensure that their trees do not interfere with power lines and Power and Water should be made aware of hazardous trees. Such trees could also cause fires due to arcing.